

Center for Business and Economic Research

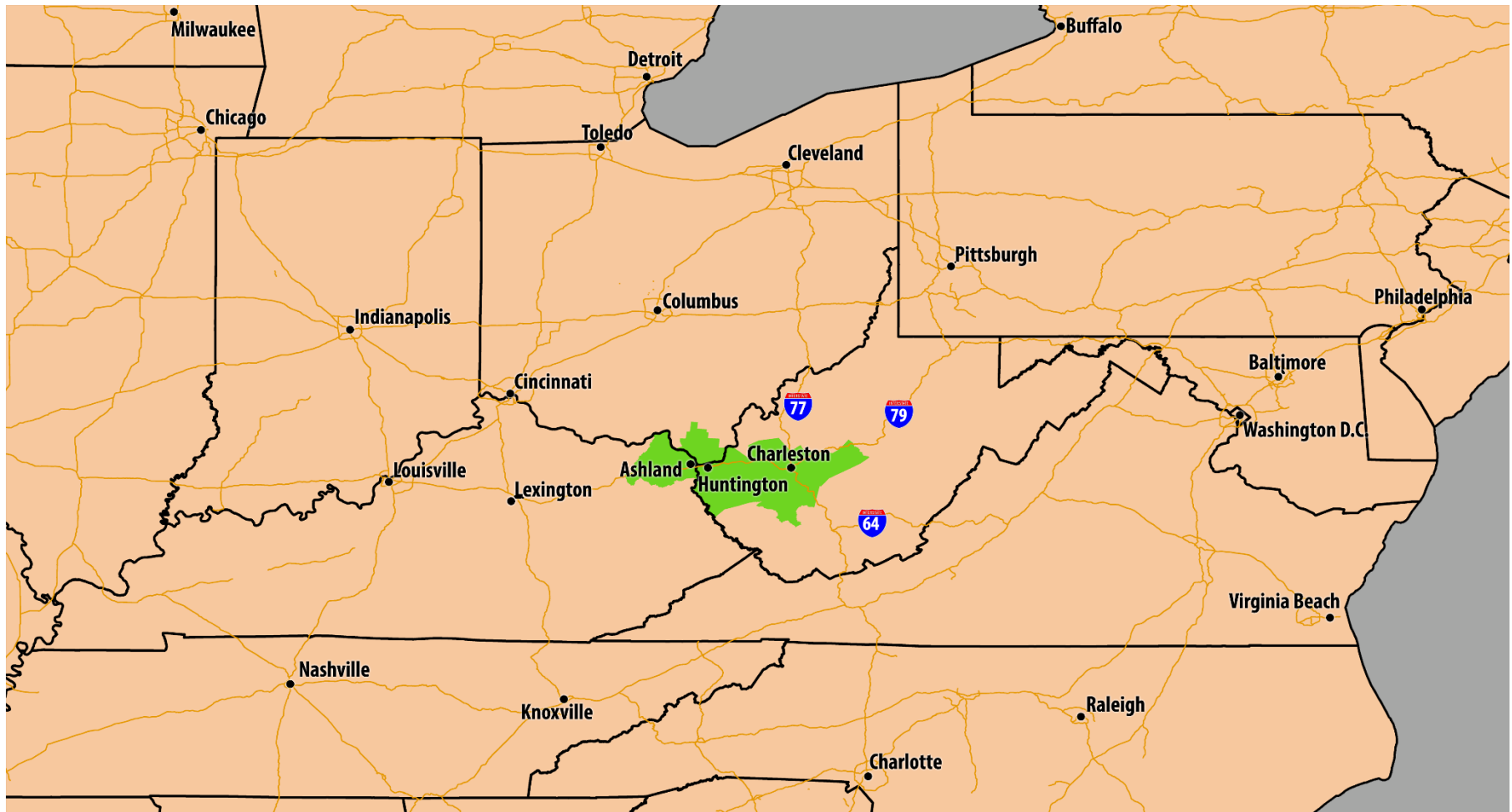
April 5, 2018

Advantage Valley Economic Data



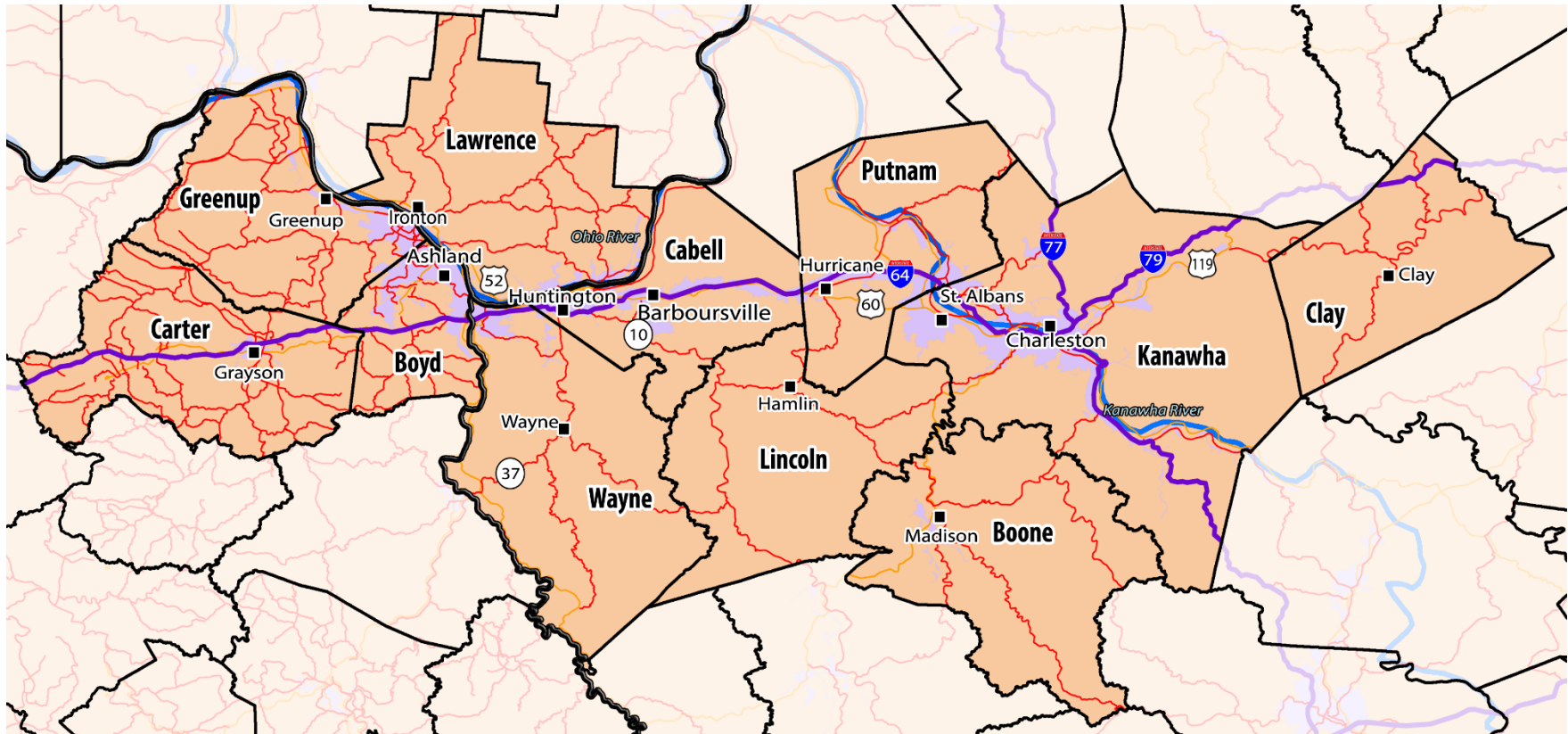
CBER
CENTER FOR BUSINESS
AND ECONOMIC RESEARCH

Advantage Valley 2017



The Advantage Valley Region

Advantage Valley 2017



The Advantage Valley Region

Advantage Valley 2017

Total Population – 2017	
Advantage Valley	602,589
West Virginia	1,829,464
Population by Gender	
Males	294,512
Females	308,077

SOURCE: Emsi (U.S. Census Bureau)

Population by Age – 2017	
Under 5 years	34,355
5 to 9 years	34,723
10 to 14 years	35,948
15 to 19 years	36,151
20 to 24 years	36,474
25 to 29 years	36,290
30 to 34 years	34,835
35 to 39 years	37,181
40 to 44 years	37,031
45 to 49 years	39,050
50 to 54 years	39,843
55 to 59 years	43,746
60 to 64 years	42,306
65 to 69 years	39,889
70 to 74 years	27,865
75 to 79 years	20,205
80 to 84 years	14,111
85 years and older	12,586
Median Age	42

Educational Attainment, 2017		
Level	# people	%
Less than 9 th Grade	22,625	5.30%
9 th Grade to 12 th Grade	40,617	9.60%
High School Diploma	163,646	38.50%
Some College	84,423	19.90%
Associate's Degree	29,501	6.90%
Bachelor's Degree	49,257	11.60%
Graduate Degree and Above	34,869	8.20%

SOURCE: Emsi estimates (U.S. Census Bureau)

# Jobs by Occupation (Top 25 in 2017)	
Registered Nurses	8,694
Retail Salespersons	8,402
Combined Food Prep and Serving Workers, Fast Food	7,691
Office Clerks, General	7,641
Cashiers	7,208
Customer Service Representatives	4,866
Personal Care Aides	4,636
Secretaries and Admin. Assistants except Legal, Medical and Executive	4,101
Janitors and Cleaners, Except Maids and Housekeepers	3,840
General and Operations Managers	3,801
Laborers and Freight, Stock, and Materials Movers, Hand	3,743
Waiters and Waitresses	3,437
First-Line Supervisors of Office and Administrative Support Workers	3,300
Heavy and Tractor Trailer Truck Drivers	3,188
Stock Clerks and Order Fillers	3,165
General Maintenance and Repair Workers	3,135
First-Line Supervisors of Retail Sales Workers	3,001
Nursing Assistants	2,931
Construction Laborers	2,754
Military Occupations	2,632
Bookkeeping, Accounting, and Audit Clerks	2,481
Maids and Housekeepers	2,430
Restaurant Cooks	2,250
Security Guards	2,142
Postsecondary Teachers	2,075

SOURCE: Emsi (U.S. Bureau of Labor Statistics)

Advantage Valley 2017

# Jobs and Establishments by Industry Group, 2015			
Industry (NAICS Code)	# Employees	% of Total	# of Establishments
<i>Agriculture, Forestry, Fishing and Hunting (11)</i>	33	0%	48
<i>Natural Resource & Mining (21)</i>	2,582	1%	284
<i>Construction (23)</i>	10,821	4%	1,982
<i>Manufacturing (31)</i>	15,024	6%	714
<i>Trade, Transportation, and Utilities (42-48, 22)</i>	48,845	19%	6,224
<i>Information & Financial Activities (51-53)</i>	14,867	6%	3,102
<i>Professional & Business Services (54-56)</i>	25,501	10%	3,422
<i>Education & Health Services (61-62)</i>	49,632	20%	4,112
<i>Leisure & Hospitality (71-72)</i>	25,599	10%	2,668
<i>Other Services (exc. Public Admin) (81)</i>	9,409	4%	2,892
<i>Government (90)</i>	49,925	20%	1,040
<i>Unclassified Industry</i>	20	0%	38
TOTAL	252,258		26,526

SOURCE: U.S. Census, County Business Patterns for industry data. Emsi for Government estimates.

Household Income Distribution, Estimated # of Households in 2016		
<i>Under 10k</i>	30,468	10.7%
<i>10k to 20k</i>	40,412	14.2%
<i>20k to 30k</i>	34,654	12.2%
<i>30k to 40k</i>	31,452	11.0%
<i>40k to 50k</i>	23,009	8.1%
<i>50k to 60k</i>	22,480	7.9%
<i>60k to 75k</i>	27,282	9.6%
<i>75k to 100k</i>	30,784	10.8%
<i>100k to 125k</i>	17,637	6.2%
<i>125k to 150k</i>	9,664	3.4%
<i>150k to 200k</i>	7,157	2.5%
<i>200k and over</i>	9,903	3.5%
TOTAL	284,904	

SOURCE: U.S. Census Bureau (for Cabell and Kanawha Counties); CBER estimates for total, using Cabell-Kanawha shares.

Median Household Income in 2016	
<i>Boone County, WV</i>	\$ 37,820
<i>Boyd County, KY</i>	\$ 44,140
<i>Cabell County, WV</i>	\$ 37,760
<i>Carter County, KY</i>	\$ 37,367
<i>Clay County, WV</i>	\$ 33,639
<i>Greenup County, KY</i>	\$ 46,771
<i>Kanawha County, WV</i>	\$ 46,528
<i>Lawrence County, OH</i>	\$ 44,256
<i>Lincoln County, WV</i>	\$ 36,232
<i>Putnam County, WV</i>	\$ 56,640
<i>Wayne County, WV</i>	\$ 38,311
Advantage Valley	\$ 43,720
West Virginia	\$ 43,385
United States	\$ 57,617

SOURCE: Emsi (U.S. Census Bureau); CBER-calculated weighted-average for region.

Advantage Valley 2017

Retail Sales by County in 2012	
<i>Boone County, WV</i>	\$230 million
<i>Boyd County, KY</i>	\$1 billion
<i>Cabell County, WV</i>	\$1.6 billion
<i>Carter County, KY</i>	\$270 million
<i>Clay County, WV</i>	\$46 million
<i>Greenup County, KY</i>	\$210 million
<i>Kanawha County, WV</i>	\$3.2 billion
<i>Lawrence County, OH</i>	\$560 million
<i>Lincoln County, WV</i>	\$80 million
<i>Putnam County, WV</i>	\$750 million
<i>Wayne County, WV</i>	\$260 million
TOTAL	\$8.2 billion

SOURCE: U.S. Census Bureau, 2012 Census

Distribution of Workers by Firm Size, 2015	
# of Employees	# of Establishments
<i>1 to 4</i>	11,598
<i>5 to 9</i>	5,732
<i>10 to 19</i>	4,016
<i>20 to 49</i>	2,680
<i>50 to 99</i>	860
<i>100 to 249</i>	434
<i>250 to 499</i>	106
<i>500+</i>	60
Total Private Firms	25,486

SOURCE: U.S. Census, County Business Patterns.

Labor Shed by County			
County	2017 Jobs	2017 Resident Workers	2017 Net Commuters
<i>Boone, WV</i>	5,414	7,573	-2,159
<i>Boyd, KY</i>	26,171	19,074	7,097
<i>Cabell, WV</i>	55,825	40,003	15,822
<i>Carter County, KY</i>	6,452	9,235	-2,783
<i>Clay, WV</i>	1,641	2,981	-1,340
<i>Greenup County, KY</i>	9,163	12,736	-3,573
<i>Kanawha, WV</i>	106,993	83,810	23,183
<i>Lawrence, OH</i>	14,569	26,135	-11,566
<i>Lincoln, WV</i>	3,048	6,796	-3,748
<i>Putnam, WV</i>	22,366	24,224	-1,858
<i>Wayne, WV</i>	9,439	15,091	-5,652
TOTAL	261,081	247,658	13,423

SOURCE: Emsi estimates. +/- net commuters = workers commuting into/out of county.

Unemployment Rates in 2016	
<i>Boone County, WV</i>	8.9%
<i>Boyd County, KY</i>	8.1%
<i>Cabell County, WV</i>	4.7%
<i>Carter County, KY</i>	10.2%
<i>Clay County, WV</i>	10.2%
<i>Greenup County, KY</i>	8.6%
<i>Kanawha County, WV</i>	5.4%
<i>Lawrence County, OH</i>	6.4%
<i>Lincoln County, WV</i>	8.4%
<i>Putnam County, WV</i>	4.8%
<i>Wayne County, WV</i>	6.5%

SOURCE: Bureau of Economic Analysis, Annual Averages.

Advantage Valley 2017

#	Top 50 Employers in 2017	Industry	Range of Employment
1	Charleston Area Medical Center	General Medical and Surgical Hospitals	3000-7000
2	Kanawha County Board of Education (including schools)	Education (Local Government)	3000-7000
3	King's Daughters Medical Center	General Medical and Surgical Hospitals	3000-7000
4	Walmart	General Merchandise Stores	3000-7000
5	Cabell Huntington Hospital	General Medical and Surgical Hospitals	3000-7000
6	WV Department of Health and Human Services	State Government	1500-3000
7	Marshall University	Education (State Government)	1500-3000
8	St Mary's Medical Center	General Medical and Surgical Hospitals	1500-3000
9	Cabell County Board of Education (including schools)	Education (Local Government)	1500-3000
10	West Virginia National Guard	Federal Government, Military	1500-3000
11	Appalachian Power	Electric Utilities	1500-3000
12	Marathon Petroleum	Petroleum Refineries	1500-3000
13	Blackhawk Mining, LLC	Coal Mining	1000-1500
14	Kroger	Grocery Stores	1000-1500
15	Our Lady of Bellefonte Hospital	General Medical and Surgical Hospitals	1000-1500
16	Frontier Communications	Telecommunications	1000-1500
17	Toyota Motor Manufacturing	Motor Vehicle Parts Manufacturing	1000-1500
18	Thomas Memorial Hospital	General Medical and Surgical Hospitals	1000-1500
19	Marshall Family Health	Offices of Physicians, Mental Health Specialists	1000-1500
20	West Virginia Department of Transportation	State Government	1000-1500
21	Chemours	Chemical Product and Preparation Manufacturing	750-1000
22	Amazon.com	Electronic Shopping and Mail-Order	750-1000
23	West Virginia Paving Inc.	Highway, Street, and Bridge Construction	750-1000
24	AT&T/DirectTV	Telecommunications	750-1000
25	Pretera	Individual and Family Services	750-1000

Advantage Valley 2017

26	HealthSmart Benefit Solutions	Direct Health and Medical Insurance Carriers	650-750
27	Gestamp	Metal Stamping	650-750
28	ResCare	Individual and Family Services	650-750
29	Alcon	Optical Instrument and Lens Manufacturing	650-750
30	Highmark Blue Cross Blue Shield West Virginia	Offices of Other Health Practitioners	650-750
31	Special Metals Corp	Nonferrous Metal (except Copper and Aluminum) Rolling, Drawing, and Extruding	650-750
32	WV Department of Environmental Protection	State Government	650-750
33	St Francis Hospital	General Medical and Surgical Hospitals	550-650
34	Us Army Corps of Engineers	Federal Government, Military	550-650
35	West Virginia State University	Education (State Government)	550-650
36	Capital Area Service Company	Direct Life Insurance Carriers	550-650
37	Boyd County Schools	Education (Local Government)	550-650
38	West Virginia Department of Education	State Government	450-550
39	Rite Aid	Miscellaneous Retail	450-550
40	Brickstreet Mutual Insurance	Miscellaneous Financial Investment Activities	450-550
41	The Dow Chemical Company	Chemical Product and Preparation Manufacturing	450-550
42	Smithfield Packing Company	Food Manufacturing	450-550
43	Greenup Public Schools	Education (Local Government)	450-550
44	Ashland Independent Schools	Education (Local Government)	450-550
45	Walker Machinery	Industrial Machinery and Equipment Merchant Wholesalers	450-550
46	McDonald's	Full-Service Restaurants	450-550
47	Tri State Racing & Mardi Gras Casino Resort	Accommodation and Food Services	450-550
48	TransCanada	Pipeline Transportation	350-450
49	Steel of West Virginia	Fabricated Structural Metal Manufacturing	350-450
50	Speedway	Convenience Stores	350-450

Advantage Valley 2017

SOURCES FOR TOP 50 EMPLOYERS:

1. West Virginia Department of Commerce - *Sites & Buildings*, West Virginia Development Office, 2017.
2. West Virginia State Auditor's Office.
3. Charleston Area Alliance. <http://charlestonareaalliance.org/workforce>
4. Ashland Area Alliance. <http://ashlandalliance.com/economic-development/top-employers/>
5. Huntington Area Development Council <http://www.hadco.org/choose-huntington/#section-top-employers>
6. Company sources.
7. CBER estimates.